

# Anti-SLC45A3 antibody [EPR4795(2)]

Recombinant

RabMAb

## Key facts

Isotype	IgG
Host species	Rabbit
Storage buffer	Preservative: 0.01% Sodium azide Constituents: 59% PBS, 40% Glycerol (glycerin, glycerine), 0.05% BSA
Form	Liquid
Clonality	Monoclonal
Immunogen	The exact immunogen used to generate this antibody is proprietary information.
Clone number	EPR4795(2)
Purification technique	Affinity purification Protein A
Concentration	0.127 - 0.128 mg/mL The concentration of this product may be batch-dependent <a href="#">Batch concentration finder</a> →

## Reactivity data

### IHC-P

Tested	
Species	Human
Dilution info	1/1000

## Notes

### For unpurified use at 1/100 - 1/250

Perform heat-mediated antigen retrieval with citrate buffer pH 6 before commencing with IHC staining protocol.

## WB

### Tested

#### Species

Human

#### Dilution info

1/1000 - 1/10000

#### Notes

-

## Target data

[See full target information SLC45A3](#) 

### Function

Proton-associated sucrose transporter. May be able to transport also glucose and fructose.

## Storage

#### Shipped at conditions

Blue Ice

#### Appropriate short-term storage duration

1-2 weeks

#### Appropriate short-term storage conditions

+4°C

#### Appropriate long-term storage conditions

-20°C

#### Aliquoting information

Upon delivery aliquot

#### Storage information

Avoid freeze / thaw cycle

## Notes

Mouse, Rat: We have preliminary internal testing data to indicate this antibody may not react with these species. Please contact us for more information.

Our RabMAb® technology is a patented hybridoma-based technology for making rabbit monoclonal antibodies. For details on our patents, please refer to RabMAb® patents. This product is a recombinant monoclonal antibody, which

offers several advantages including:

- High batch-to-batch consistency and reproducibility
- Improved sensitivity and specificity
- Long-term security of supply
- Animal-free batch production

For more information, read more on recombinant antibodies.

---

## Supplementary info

This supplementary information is collated from multiple sources and compiled automatically.

<b>Activity summary</b>	SLC45A3 also known as Prostate Cancer Associated Transcript 6 (PCAT6) is a member of the solute carrier family that functions primarily as a transporter. This protein has a mass of approximately 51 kDa. It is primarily expressed in the prostate but also found in other tissues though at lower levels. SLC45A3 is involved in transporting certain solutes which is important for maintaining cellular homeostasis.
<b>Biological function summary</b>	This transporter plays a critical role in regulating pH and solute concentration within the cells. SLC45A3 does not appear to belong to a large protein complex but it interacts with elements of the intracellular environment that modulate its activity. Its solute transportation role affects a range of cellular processes impacting overall cell health and function.
<b>Pathways</b>	SLC45A3 operates within the cellular homeostasis and metabolic pathways. It closely relates to the acid-base balance pathway ensuring that cells maintain optimal internal conditions. Additionally its function can link to the androgen receptor signaling pathway an important pathway in prostate tissue where it may interact indirectly with other transport proteins that assist in maintaining homeostatic balance.
<b>Associated diseases and disorders</b>	SLC45A3 is significantly connected to prostate cancer and may also have implications in other types of cancer. It associates with the androgen receptor which plays a major role in the progression of prostate cancer. Understanding the dynamics of SLC45A3 can help in comprehending its role in these diseases potentially offering targets for new therapeutic strategies.

---

## Product promise

### Tested

We have tested this species and application combination and it works. It is covered by our product promise.

### Expected

We have not tested this specific species and application combination in-house, but expect it will work. It is covered by our product promise.

### Predicted

This species and application combination has not been tested, but we predict it will work based on strong homology. However, this combination is not covered by our product promise.

Not recommended

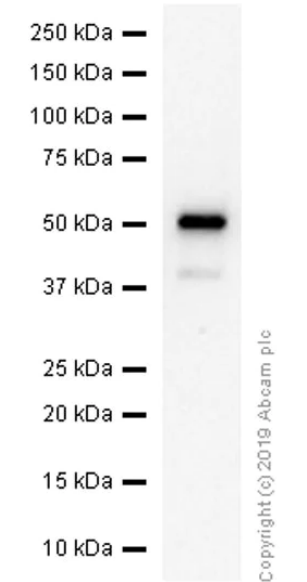
We do not recommend this combination. It is not covered by our product promise.

We are dedicated to supporting your work with high quality reagents and we are here for you every step of the way should you need us.

In the unlikely event of one of our products not working as expected, you are covered by our product promise.

Full details and terms and conditions can be found here:  
Terms & Conditions.

5 product images



### Western blot - Anti-SLC45A3 antibody [EPR4795(2)] (ab137065)

**Blocking/Diluting buffer:** 5% NFDM/TBST

All lanes:  
Western blot - Anti-SLC45A3 antibody [EPR4795(2)] (ab137065) at 1/1000 dilution

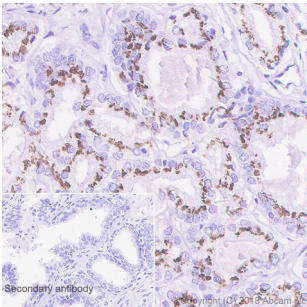
All lanes:  
Human prostate lysate at 15 µg

Secondary

All lanes:  
Goat Anti-Rabbit IgG (HRP) with minimal cross-reactivity with human IgG at 1/2000 dilution

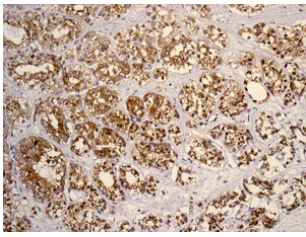
Predicted band size: 59 kDa

Observed band size: 55 kDa



### Immunohistochemistry (Formalin/PFA-fixed paraffin-embedded sections) - Anti-SLC45A3 antibody [EPR4795(2)] (ab137065)

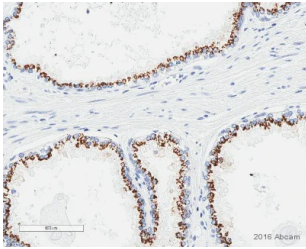
Immunohistochemistry (Formalin/PFA-fixed paraffin-embedded sections) analysis of human prostate carcinoma tissue sections labeling SLC45A3 with purified ab137065 at 1/1000 dilution (0.128 µg/mL). Heat mediated antigen retrieval was performed using [ab93684](#) (Tris/EDTA buffer, pH 9.0). ImmunoHistoProbe one step HRP Polymer (ready to use) was used as the secondary antibody. Negative control: PBS instead of the primary antibody. Hematoxylin was used as a counterstain.



## Immunohistochemistry (Formalin/PFA-fixed paraffin-embedded sections) - Anti-SLC45A3 antibody [EPR4795(2)] (ab137065)

Immunohistochemical analysis of paraffin-embedded Human prostatic adenocarcinoma tissue labelling SLC45A3 with as137065, unpurified, at 1/100 dilution.

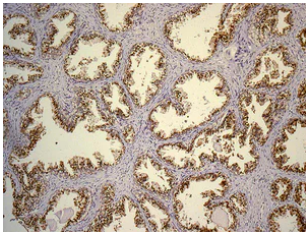
Perform heat mediated antigen retrieval with citrate buffer pH 6 before commencing with IHC staining protocol.



## Immunohistochemistry (Formalin/PFA-fixed paraffin-embedded sections) - Anti-SLC45A3 antibody [EPR4795(2)] (ab137065)

Immunohistochemical analysis of human prostate tissue sections labelling SLC45A3 with ab137065, unpurified, at a dilution of 1/2000. The sections were fixed with 10% NBF. The secondary antibody used was HRP conjugated goat anti rabbit IgG. Antigen retrieval was heat mediated using Tris/EDTA pH 9.0.

This image is courtesy of a customer review submitted by Faye Doherty



## Immunohistochemistry (Formalin/PFA-fixed paraffin-embedded sections) - Anti-SLC45A3 antibody [EPR4795(2)] (ab137065)

Immunohistochemical analysis of paraffin-embedded Human prostatic hyperplasia tissue labelling SLC45A3 with ab137065, unpurified, at 1/100 dilution.

Perform heat mediated antigen retrieval with citrate buffer pH 6 before commencing with IHC staining protocol.

Please note: All products are 'FOR RESEARCH USE ONLY. NOT FOR USE IN DIAGNOSTIC OR THERAPEUTIC PROCEDURES'.